

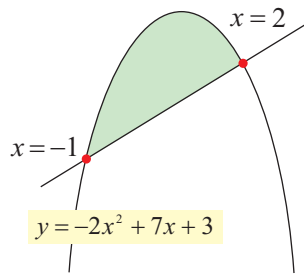
積分・面積 実力判定問題

※各問2分、合計20分以内で解きなさい。

■ 次の緑色の面積 S を求めよ。

問題①

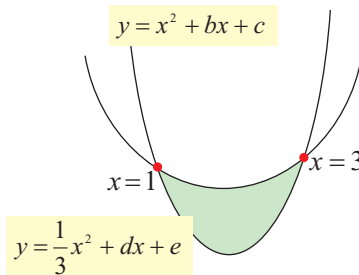
$$y = -2x^2 + 7x + 3$$



問題②

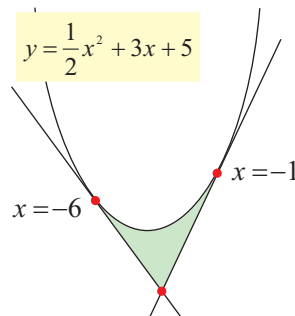
$$y = x^2 + bx + c$$

$$y = \frac{1}{3}x^2 + dx + e$$



問題③

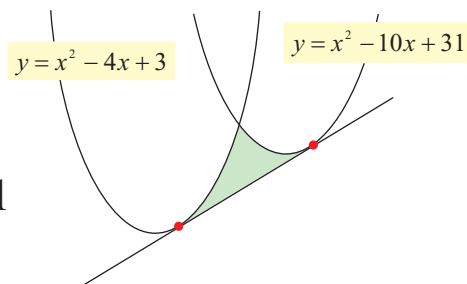
$$y = \frac{1}{2}x^2 + 3x + 5$$



問題④

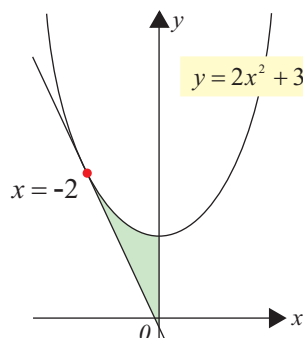
$$y = x^2 - 4x + 3$$

$$y = x^2 - 10x + 31$$



問題⑤

$$y = 2x^2 + 3$$



■ 次の式で囲まれた面積 S を求めよ。

問題⑥

$$y = x^2 - ax + a^2$$

$$y = -x^2 + ax + 2a^2$$

問題⑦

$$y = x^2 + 4x - 3$$

$$y = 2x$$

問題⑧

$$y = 4x^2 - 27$$

$$y = x^2$$

問題⑨

$$y = x - 1$$

$$y = x^2 - x$$

$$y = x^2 - 3x + 3$$

問題⑩

$$y = x^2$$

$$y = 4x - 4$$

$$y = -4x - 4$$